



Instituto Argentino de la Energía "General Mosconi"

*Informe de Coyuntura
del Sector Energético*

*Datos del mes de
Mayo de 2011*

Tabla de contenidos

Sector Hidrocarburos

Producción media diaria de Petróleo por Operador.....	3
Participación de Mayo de 2011.....	4
Evolución de la producción de Petróleo.....	4
Producción media diaria de Gas Natural por Operador.....	5
Participación de Mayo de 2011.....	6
Evolución de la producción de Gas Natural.....	6
Evolución de la producción diaria de Gas Natural y Petróleo.....	7
Petróleo procesado.....	8
Petróleo procesado por refinería.....	9
Derivados obtenidos.....	10
Ventas al mercado interno de derivados.....	11
Gráficos de ventas acumuladas.....	12
Exportaciones e Importaciones en Volumen.....	13
Exportaciones e Importaciones en Millones de U\$S.....	14

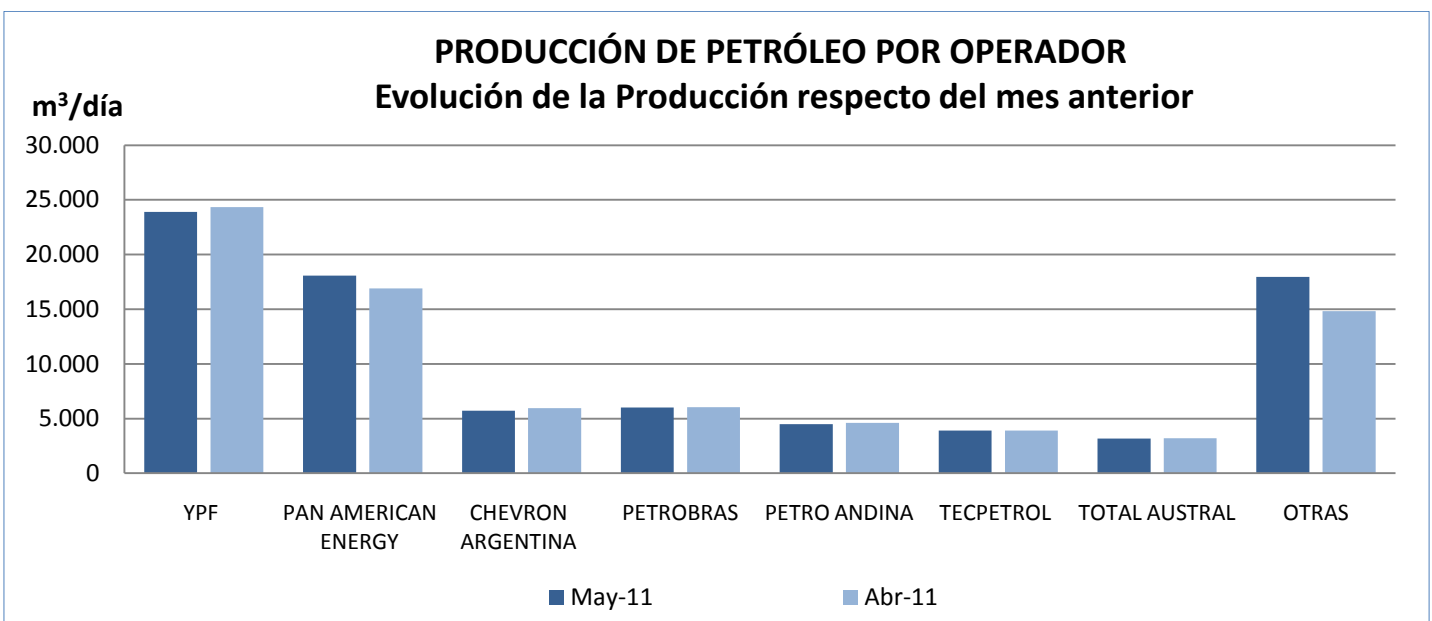
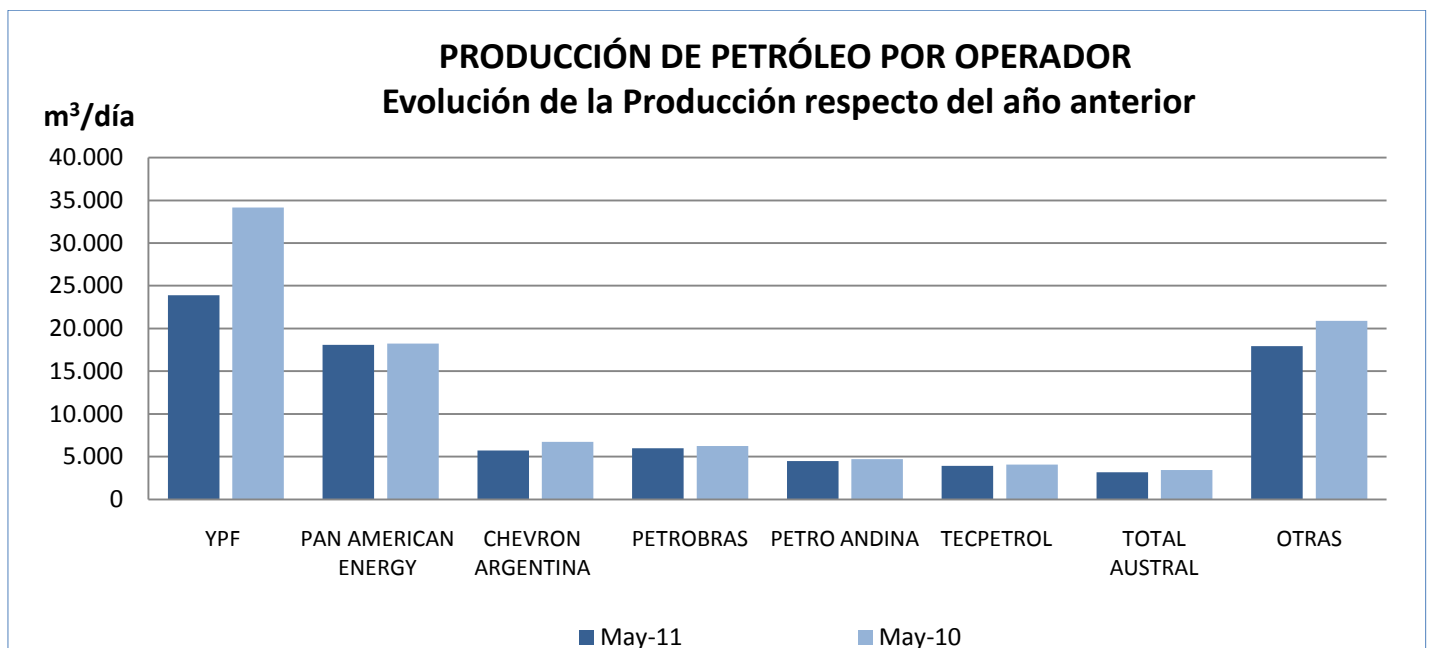
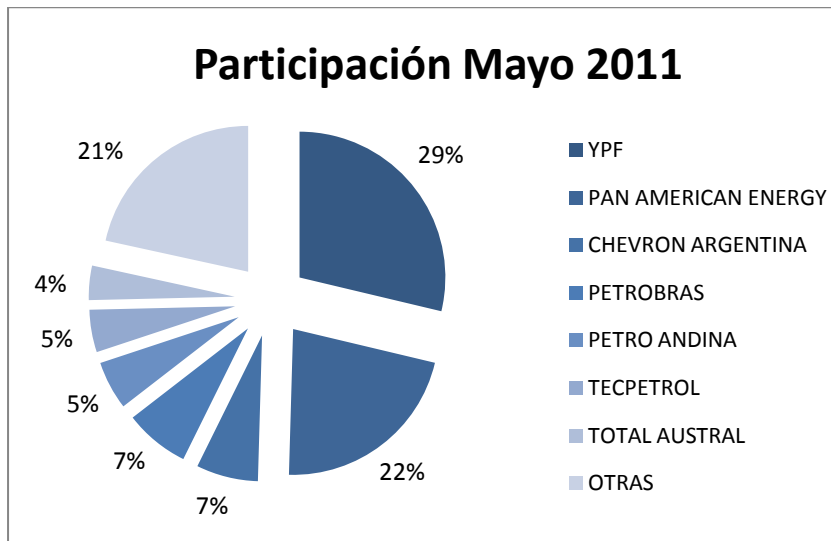
Sector Energético

Generación Neta de energía eléctrica.....	15
Importación y Exportación UTE.....	16
Gráfico de Generación neta para cubrir demanda.....	17
Demanda de energía eléctrica.....	18
Gráficos de evolución de la demanda de energía eléctrica.....	18
Caudales y cotas de los aprovechamientos hidroeléctricos.....	22
Gráficos de caudales de los principales ríos.....	23
Consumo de combustibles en centrales térmicas.....	24
Gráficos de evolución de consumo de combustibles.....	24
Precios medios monómicos de energía eléctrica.....	26
Gráficos de evolución de precios monómicos.....	26

PRODUCCIÓN DE PETRÓLEO POR OPERADOR							
Producción Media Diaria (m ³ / día)							
	May-10	Abr-11	May-11	Particip.	Particip. Acumulado	Variación May'11/Abr'11	Variación May'11/May'10
YPF S.A.	34,159.6	24,341.7	23,899.9	28.72%	28.72%	-1.81%	-30.03%
PAN AMERICAN ENERGY	18,245.2	16,913.2	18,088.7	21.74%	50.46%	6.95%	-0.86%
CHEVRON ARGENTINA S.R.L.	6,750.4	5,949.7	5,707.9	6.86%	57.31%	-4.06%	-15.44%
PETROBRAS ENERGIA S.A.	6,253.6	6,044.9	6,000.4	7.21%	64.53%	-0.74%	-4.05%
PETRO ANDINA RESOURCES LTD.	4,724.1	4,618.5	4,484.5	5.39%	69.91%	-	-5.07%
TECPETROL S.A.	4,086.0	3,912.0	3,919.6	4.71%	74.62%	0.19%	-4.07%
TOTAL AUSTRAL S.A.	3,431.3	3,206.7	3,164.4	3.80%	78.43%	-1.32%	-7.78%
OCCIDENTAL ARGENTINA E. & P.	6,348.5	0.0	0.0	0.00%	78.43%	-	-100.00%
PETROLERA ENTRE LOMAS S.A.	2,330.1	2,305.4	2,361.2	2.84%	81.26%	2.42%	1.34%
PLUSPETROL S.A.	1,872.9	1,924.3	1,877.9	2.26%	83.52%	-2.41%	0.27%
SINOPEC ARGENTINA EXP. AND PROD.	0.0	1,076.0	4,249.2	5.11%	88.63%	294.89%	-
COMPAÑÍAS ASOCIADAS PETROLERAS	1,654.8	1,839.0	1,803.5	2.17%	90.79%	-1.93%	8.98%
PETROQUIMICA COMODORO RIVADAVIA	1,143.1	1,298.7	1,214.1	1.46%	92.25%	-6.51%	6.22%
ENAP SIPETROL ARGENTINA S.A.	1,762.6	1,173.6	1,200.5	1.44%	93.70%	2.29%	-31.89%
APACHE ENERGIA ARGENTINA S.R.L.	1,039.4	1,012.6	990.7	1.19%	94.89%	-2.16%	-4.68%
PETROLERA LF COMPANY S.R.L.	783.8	799.7	807.0	0.97%	95.86%	0.91%	2.95%
ROCH S.A.	742.2	662.9	685.1	0.82%	96.68%	3.35%	-7.70%
CHAÑARES HERRADOS S.A.	565.6	479.3	480.7	0.58%	97.26%	0.29%	-15.02%
PETROLIFERA PETROLEUM	534.2	286.8	298.4	0.36%	97.61%	4.02%	-44.15%
PLUSPETROL ENERGY S.A.	345.8	275.8	275.3	0.33%	97.95%	-0.18%	-
PETROLERA EL TREBOL S.A.	287.7	283.3	281.8	0.34%	98.28%	-0.52%	-2.06%
PETROLEOS SUDAMERICANOS S.A.	242.7	230.2	245.0	0.29%	98.58%	6.43%	0.94%
CENTRAL INTERNATIONAL CORPORATION	190.4	179.3	180.0	0.22%	98.79%	0.39%	-5.43%
MEDANITO S.A.	122.8	170.5	0.0	0.00%	98.79%	-100.00%	-100.00%
CAPEX S.A.	133.1	124.8	128.0	0.15%	98.95%	2.59%	-3.81%
GRAN TIERRA ENERGY ARGENTINA S.A.	120.8	109.0	111.4	0.13%	99.08%	2.21%	-7.81%
APACHE PETROLERA ARGENTINA S.A.	80.1	102.2	113.0	0.14%	99.22%	10.56%	40.99%
ENARSA ENERGIA ARGENTINA S.A.	82.4	80.0	76.9	0.09%	99.31%	-3.88%	-6.73%
SAN JORGE PETROLEUM S.A.	99.0	90.8	75.9	0.09%	99.40%	-16.38%	-23.33%
COLHUE HUAPI S.A.	77.7	82.3	79.0	0.09%	99.50%	-3.93%	1.66%
PETROLERA SAN JOSE S.R.L.	83.5	73.8	70.6	0.08%	99.58%	-4.45%	-15.54%
DAPETROL S.A.	79.4	53.2	64.4	0.08%	99.66%	21.11%	-18.84%
INGENIERIA ALPA S.A.	31.1	7.7	49.9	0.06%	99.72%	FE	60.38%
COMPAÑÍA GENERAL DE COMBUSTIBLES	13.6	21.1	18.6	0.02%	99.74%	-11.94%	36.33%
EPSUR S.A.	23.0	30.8	16.1	0.02%	99.76%	-47.53%	-29.82%
CRI HOLDING, INC.	19.0	19.4	20.2	0.02%	99.79%	4.03%	6.39%
GRECOIL y CIA. S.R.L.	21.9	17.8	16.0	0.02%	99.80%	-9.86%	-26.82%
CENTRAL PATAGONIA S.R.L.	19.6	0.0	0.0	0.00%	99.80%	-	-100.00%
GEPARK ARGENTINA LTD.	11.0	11.5	10.9	0.01%	99.82%	-5.19%	-0.53%
INTERENERGY ARGENTINA S.A.	5.2	5.0	6.1	0.01%	99.82%	21.13%	16.67%
INGENIERIA SIMA S.A.	9.3	5.3	3.3	0.00%	99.83%	-37.06%	-64.55%
NECON	6.2	0.2	0.0	0.00%	99.83%	-100.00%	-100.00%
TOTAL	98,532.8	79,820.2	83,218.6	-	-	4.26%	-15.54%

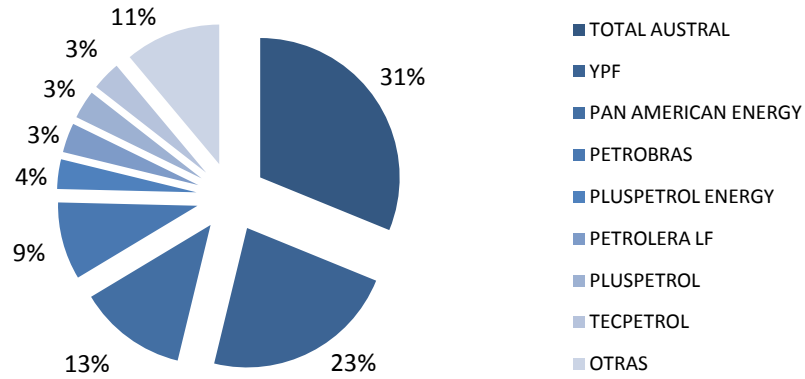
FE: Valores fuera de escala

Fuente: Secretaría de Energía



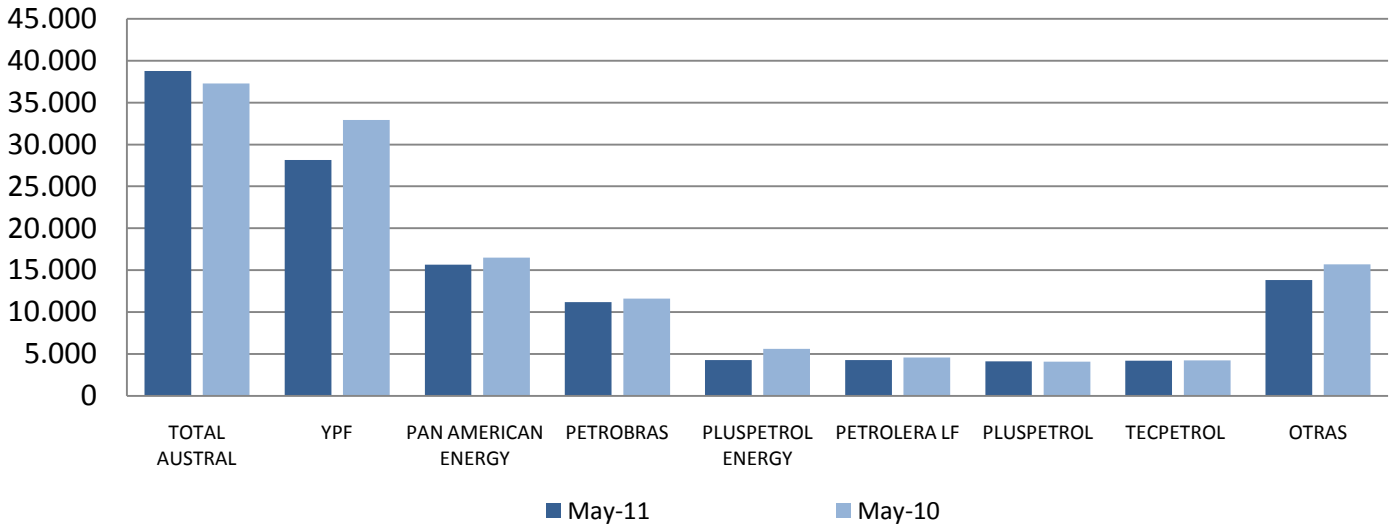
PRODUCCIÓN DE GAS POR OPERADOR							
Producción Media Diaria (Mm ³ / día)							
	May-10	Abr-11	May-11	Particip.	Particip. Acumulado	Variación May'11/Abr'11	Variación May'11/May'10
TOTAL AUSTRAL	37271.2	37904.4	38785.9	31.16%	31.16%	2.33%	4.06%
YPF	32918.1	27655.7	28169.0	22.63%	53.80%	1.86%	-14.43%
PAN AMERICAN ENERGY	16500.4	14413.7	15668.2	12.59%	66.39%	8.70%	-5.04%
PETROBRAS ENERGIA	11616.9	10873.4	11193.7	8.99%	75.38%	2.95%	-3.64%
PLUSPETROL ENERGY	5597.7	4313.6	4271.1	3.43%	78.81%	-0.99%	-23.70%
PETROLERA LF COMPANY	4575.5	4376.2	4260.4	3.42%	82.23%	-2.65%	-6.89%
PLUSPETROL	4087.4	4125.2	4115.6	3.31%	85.54%	-0.23%	0.69%
TECPETROL	4216.9	4001.8	4186.9	3.36%	88.91%	4.63%	-0.71%
APACHE ENERGIA ARGENTINA	3679.2	4177.7	4512.7	3.63%	92.53%	8.02%	22.65%
OCCIDENTAL ARGENTINA E. AND P.	1984.4	0.0	0.0	0.00%	92.53%	-	-100.00%
CAPEX S.A.	1982.2	1865.9	1830.1	1.47%	94.00%	-1.92%	-7.67%
ROCH S.A.	1930.4	1768.7	1803.5	1.45%	95.45%	1.97%	-6.57%
ENAP SIPETROL ARGENTINA	2335.9	826.2	882.7	0.71%	96.16%	6.84%	-62.21%
PETROLERA ENTRE LOMAS	1002.2	1195.2	1190.4	0.96%	97.12%	-0.40%	18.78%
CHEVRON ARGENTINA	738.7	716.2	699.3	0.56%	97.68%	-2.35%	-5.33%
PETROQUIMICA C. RIVADAVIA	740.4	696.2	738.2	0.59%	98.27%	6.04%	-0.29%
MEDANITO	357.9	462.2	0.0	0.00%	98.27%	-100.00%	-100.00%
SINOPEC ARGENTINA EXP. And PROD.	0.0	259.6	1234.8	0.99%	99.26%	375.60%	-
SAN JORGE PETROLEUM	239.1	122.3	118.2	0.09%	99.36%	-3.31%	-50.55%
PETRO ANDINA RESOURCES	174.6	203.3	200.5	0.16%	99.52%	-1.39%	14.83%
PETROLIFERA PETROLEUM	142.3	130.4	140.6	0.11%	99.63%	7.80%	-1.18%
COMPAÑÍAS ASOCIADAS PETROLERAS	71.9	63.8	65.7	0.05%	99.69%	3.07%	-8.58%
ARPETROL ARGENTINA	58.1	38.6	56.3	0.05%	99.73%	45.80%	-3.17%
CÍA. GENERAL DE COMBUSTIBLES	40.0	48.1	44.6	0.04%	99.77%	-7.16%	11.71%
PETROLERA PIEDRA DEL AGUILA	34.7	0.4	0.0	0.00%	99.77%	-100.00%	-100.00%
PETROLEOS SUDAMERICANOS	29.3	27.8	28.0	0.02%	99.79%	0.61%	-4.40%
APACHE PETROLERA ARGENTINA	23.7	37.9	42.8	0.03%	99.82%	12.89%	80.48%
GRAN TIERRA ENERGY ARGENTINA	23.1	18.4	18.6	0.01%	99.84%	1.25%	-19.33%
CHAÑARES HERRADOS	21.1	18.9	19.2	0.02%	99.85%	1.84%	-9.09%
CENTRAL INTERNATIONAL CORP.	19.0	18.4	26.4	0.02%	99.87%	43.72%	38.85%
COLHUE HUAPI	16.6	16.8	16.8	0.01%	99.89%	-0.07%	0.70%
PETROLERA EL TREBOL	9.0	7.8	10.1	0.01%	99.90%	29.58%	11.64%
EPSUR	7.1	9.6	5.4	0.00%	99.90%	-43.74%	-23.89%
PETROLERA SAN JOSE	7.0	5.8	5.7	0.00%	99.91%	-1.64%	-18.45%
GEPARK ARGENTINA	2.9	2.5	2.6	0.00%	99.91%	5.65%	-10.27%
INGENIERIA ALPA	2.8	0.0	6.3	0.01%	99.91%	-	127.69%
OIL STONE ENERGÍA	0.0	0.0	103.1	0.08%	100.00%	-	-
CRI HOLDING, INC.	0.6	0.3	0.2	0.00%	100.00%	-7.23%	-61.79%
GRECOIL y CIA. S.R.L.	0.9	1.8	0.9	0.00%	100.00%	-52.64%	0.56%
MISAHAR ARGENTINA	0.0	0.8	0.1	0.00%	100.00%	-84.58%	-
ENARSA ENERGIA ARGENTINA	1.9	4.5	4.4	0.00%	100.00%	-2.61%	124.44%
TOTAL	132,461.2	120,410.1	124,459.2			3.36%	-6.04%

Participación Mayo 2011



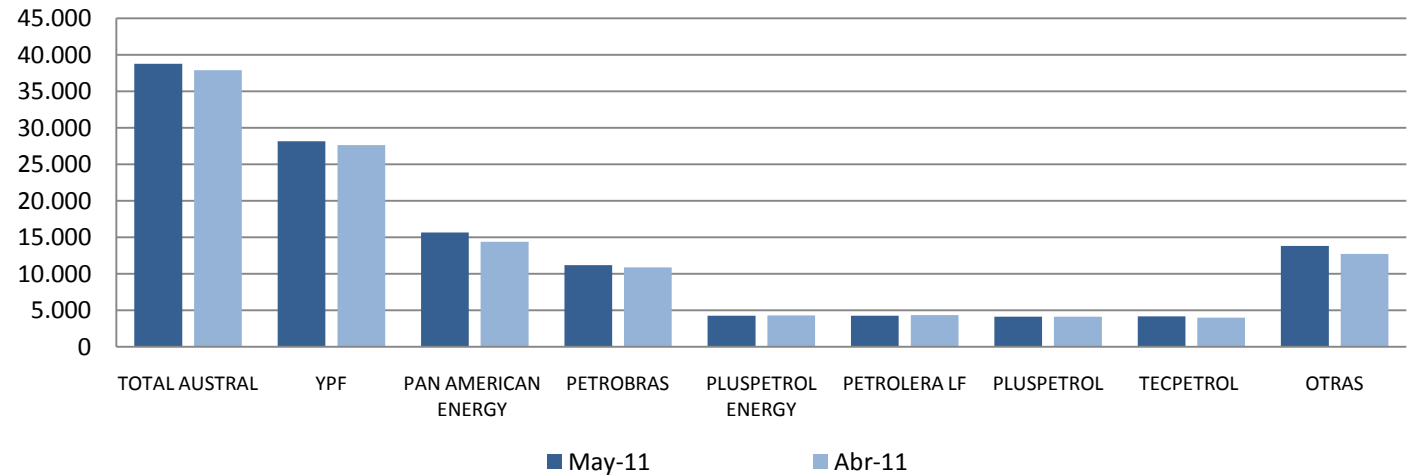
PRODUCCIÓN DE GAS POR OPERADOR Evolución de la Producción respecto del año anterior

Mm³/día



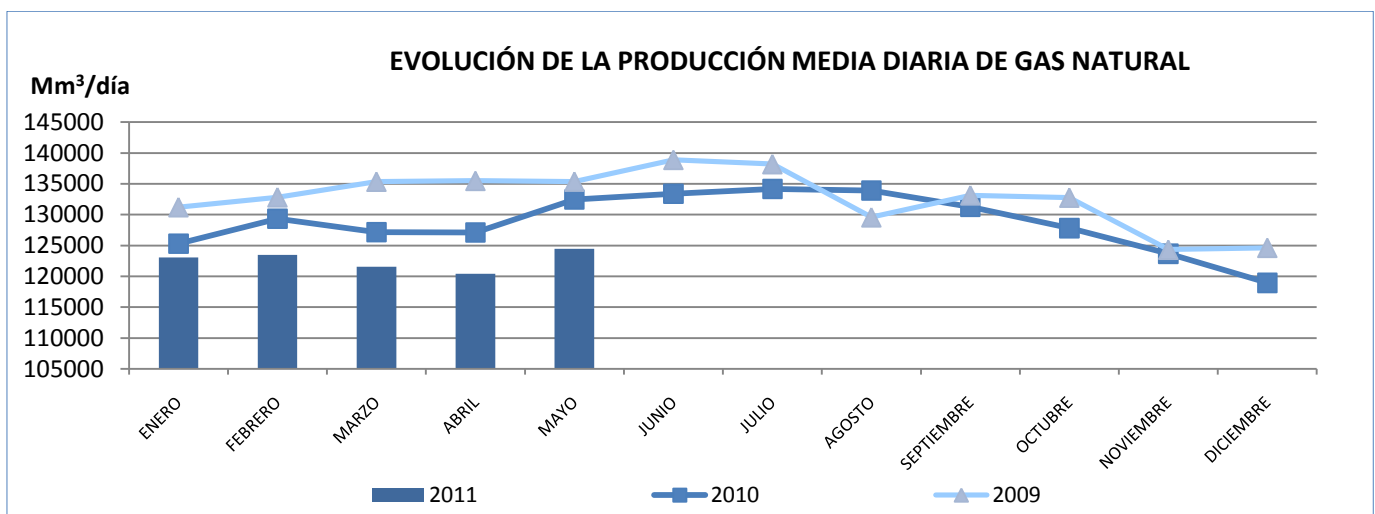
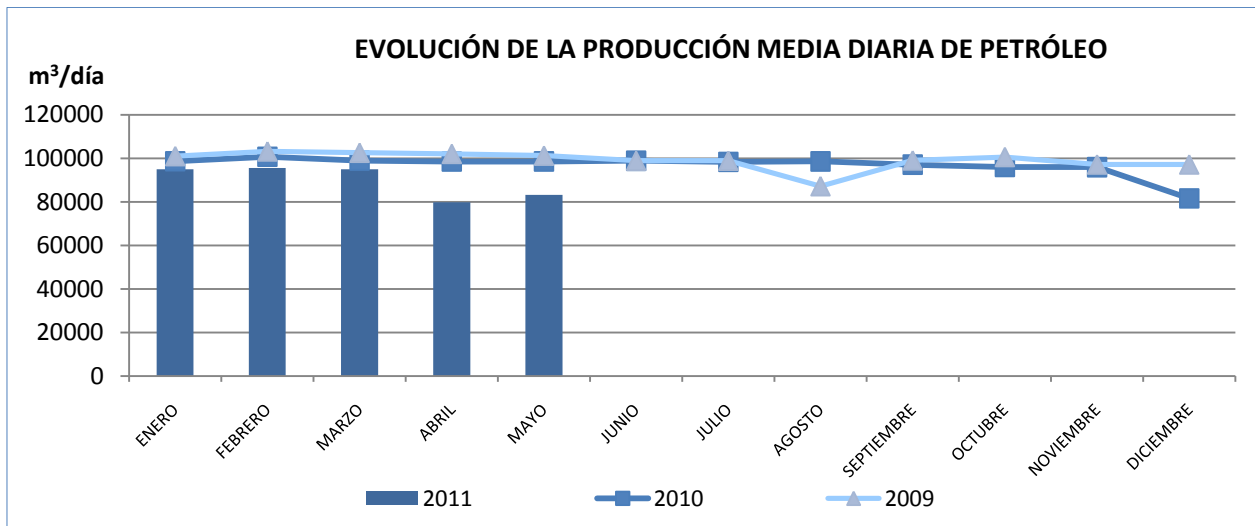
PRODUCCIÓN DE GAS POR OPERADOR Evolución de la Producción respecto del mes anterior

Mm³/día



Fuente: Secretaría de Energía

Elaboración: I.A.E. "General Mosconi"



PETRÓLEO PROCESADO NACIONAL E IMPORTADO - miles de m3 / día										
		Mayo 2010	Abril 2011	Mayo 2011	Variación May'11/Abr'11	Variación May'11/May'10	Acumulado a Mayo			Año Móvil
							2011	2010	Variación	Ac. Jun'10-May'11 / Ac. Jun'09-May'10
NACIONAL	Santa Cruz	1.74	1.25	1.31	4.75%	-24.65%	7.56	11.71	-35.43%	-11.03%
	Tierra del Fuego	2.20	2.10	1.93	-8.16%	-12.00%	9.16	8.28	10.72%	10.32%
	San Sebastián	0.64	0.72	0.55	-23.71%	-13.86%	4.91	4.11	19.37%	-16.77%
	Mendoza Norte	4.93	5.22	4.92	-5.71%	-0.23%	25.42	25.18	0.93%	-8.02%
	Cañadón Seco	15.83	11.38	3.48	-69.39%	-77.99%	57.56	78.10	-26.30%	2.65%
	Escalante	15.48	18.85	22.67	20.27%	46.43%	91.76	79.21	15.84%	0.47%
	Cuenca Neuquina	40.89	41.23	40.45	-1.89%	-1.08%	208.28	215.76	-3.47%	-1.69%
	Cuenca Noroeste	0.23	0.31	0.28	-9.29%	25.10%	1.59	1.45	9.78%	-0.94%
	Jujuy	0.07	0.03	0.07	122.87%	-2.65%	0.26	0.23	15.17%	6.62%
Salta	1.69	1.27	1.43	12.68%	-15.15%	7.33	8.56	-14.29%	-13.67%	
Total Petróleo Nacional		83.69	82.37	77.10	42.43%	-76.08%	413.82	432.57	-4.34%	-1.44%
Crudo importado		0.00	0.00	0.00	0.00%	0.00%	0.00	0.00	-	-

INSUMOS PROCESADOS POR REFINERÍA - miles de m³ / día

EMPRESA	REFINERÍA	Mayo 2010	Abril 2011	Mayo 2011	Variación May'11/Abr'11	Variación May'11/May'10	Acumulado a Mayo			Año Móvil Ac. Jun'10-May'11 / Ac. Jun'09-May'10
							2011	2010	Variación	
YPF S.A.	La Plata	30.59	29.08	23.92	-17.75%	-21.81%	146.69	161.84	-9.36%	-0.47%
	Luján de Cuyo	16.01	18.09	16.38	-9.47%	2.27%	86.57	86.95	-0.43%	-1.78%
	Plaza Huincul	4.48	4.52	4.76	5.35%	6.36%	23.33	22.69	2.80%	0.06%
SHELL C.A.P.S.A.	Dock Sud	14.73	13.03	13.24	1.59%	-10.11%	70.18	69.23	1.37%	1.64%
ESSO S.A.P.A.	Campana	13.93	13.63	13.66	0.19%	-1.94%	67.05	65.17	2.89%	-0.44%
	Galván	0.00	0.00	0.00	-	-	0.00	0.00	-	-
PETROBRAS ENERGIA S.A.	Elicábe	4.28	5.44	4.97	-8.60%	16.26%	26.05	23.72	9.81%	11.10%
	San Lorenzo	6.38	5.05	2.00	-60.40%	-68.64%	23.81	31.90	-25.37%	-6.46%
WENTEN S.R.L.	Sauce Viejo	0.00	0.00	0.00	-	-	0.00	0.00	-	-
	Estandar Energy	0.00	0.00	0.00	-	-	0.00	0.00	-	-
REFINOR S.A.	Campo Duran	2.43	1.92	2.24	16.47%	-7.75%	11.25	12.56	-10.46%	-12.65%
FOX PETROL S.A.	FOX-NEUQUEN	0.26	0.10	0.08	-23.17%	-68.59%	0.50	1.39	-63.78%	-28.29%
PETROLERA ARGENTINA S.A.	Pet. Argentina Neuquén	0.58	0.00	0.00	-	-100.00%	0.00	1.86	-100.00%	-73.00%
Destilería Argentina de Petróleo S.A.	Dock Sud-DAPSA	0.14	0.22	0.19	-14.55%	36.27%	0.95	0.73	30.29%	80.39%
New American Oil	Maipú - NAO	0.00	0.00	0.00	-	-	0.00	0.00	-	-
	Plaza Huincul-NAO	0.14	0.23	0.21	-8.70%	50.74%	1.08	0.73	46.61%	26.08%
ENARSA Energía Arg. S.A.	Campana-ENARSA	0.00	0.54	0.00	-100.00%	-	1.58	0.00	-	-
Total Especialidades Arg,	Tablada Blending	0.10	0.11	0.10	-10.55%	3.40%	0.50	0.47	6.75%	147.31%
Polipetrol S.A.	Luján de Cuyo (Polipetrol)	0.11	0.08	0.06	-24.73%	-42.74%	0.39	0.50	-22.71%	-2.53%
PANAPETROLEO S.A.	Gral. Rodríguez	0.04	0.04	0.00	-100.00%	-100.00%	0.12	0.14	-18.32%	251.94%
Carboclor S.A.	Campana-Sol	0.05	0.00	0.00	-	-100.00%	0.00	0.14	-100.00%	-22.91%
Texaco Petrolera Argentina SA	Planta Lubricantes - TEX	0.03	0.03	0.02	-38.28%	-32.99%	0.13	0.17	-25.96%	100.44%
C PETROL S.A.	Colonia Catriel - M y C	0.01	0.06	0.04	-35.67%	298.83%	0.21	0.08	170.67%	334.35%
AGIP LUBRICANTES ARG.	AGIP- Tigre	0.01	0.00	0.00	-	-100.00%	0.04	0.10	-62.45%	28.02%
Fuchs Argentina S.A.	Pacheco - FUCHS ARG.	0.02	0.01	0.02	11.06%	7.77%	0.08	0.08	1.07%	135.75%
Febra Petrol S.A.	Planta FEBRA	0.02	0.00	0.00	-	-100.00%	0.00	0.06	-93.65%	72.06%
Grasta Petrol	Gral. Rodríguez	0.01	0.07	0.08	12.86%	433.73%	0.28	0.02	FE	FE
Energía Derivados Del Petróleo S.A.	GRAL. RODRIGUEZ - EDDP	0.01	0.07	0.00	-100.00%	-100.00%	0.18	0.05	238.83%	141.96%
Ingeniería Ambiental S.A.	Francisco Solano	0.00	0.01	0.01	-13.43%	43.40%	0.03	0.02	13.83%	-21.14%
Interlub S.A.	Planta LOMA HERMOSA	0.00	0.00	0.00	-100.00%	-100.00%	0.01	0.02	-21.65%	102.35%
SaltaPetrol SRL	SaltaPetrol - Gral. Güemes	0.01	0.00	0.00	87.18%	-6.33%	0.02	0.02	19.46%	4.35%
BRUERRE-EME	Planta Vicente Casares	0.00	0.00	0.00	-	-100.00%	0.00	0.01	-100.00%	-35.36%
Refinadora Neuquina	Neuquén	0.00	0.44	0.49	11.40%	-	1.49	0.00	-	-
TOTAL		94.36	92.79	82.45	-11.14%	-12.61%	462.51	480.66	-3.78%	3.81%

FE: Valores fuera de escala

Fuente: Secretaría de Energía

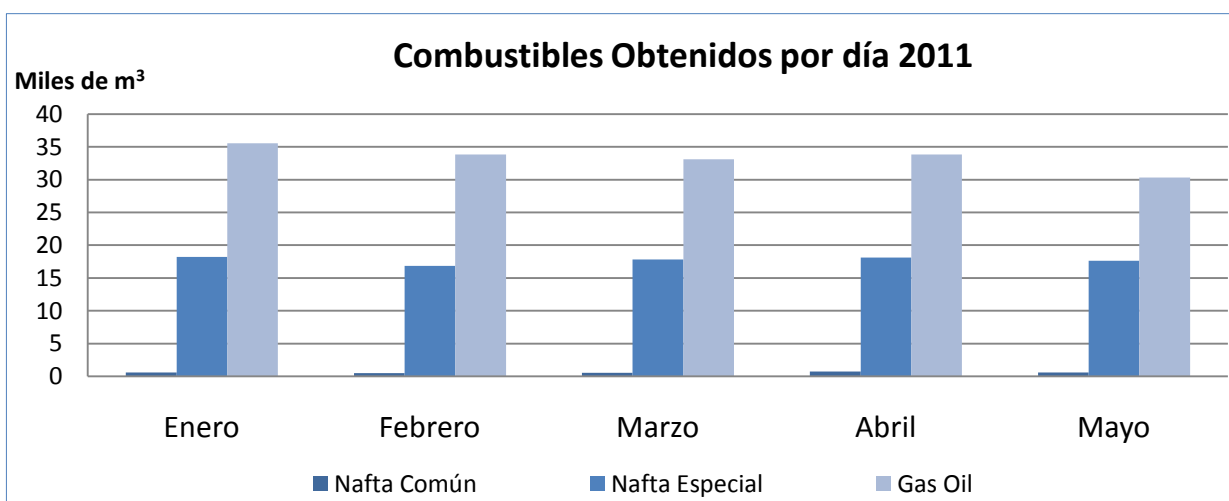
Elaboración: I.A.E. "General Mosconi"

DERIVADOS OBTENIDOS (Miles de m³/día)

	Mayo	Abril	Mayo	Variación	Variación	Acumulado a Mayo			Año Móvil
	2010	2011	2011	May'11/Abr'11	May'11/May'10	2011	2010	Variación	Ac. Jun'10-May'11 / Ac. Jun'09-May'10
Combustibles Retropropulsión	4,585	4,744	4,524	-4.65%	-1.32%	23,857	22,995	3.75%	0.49%
Diesel Oil	81	51	40	-20.27%	-50.38%	207	1,271	-83.69%	-86.73%
Fuel Oil *	6,971	4,978	4,791	-3.76%	-31.28%	24,931	36,637	-31.95%	-13.63%
Gas Oil	33,174	33,864	30,329	-10.44%	-8.58%	166,704	170,928	-2.47%	0.00%
Kerosene	175	104	165	58.38%	-6.09%	512	674	-24.00%	FE
Nafta Común	883	737	576	-21.79%	-34.74%	2,927	4,573	-35.98%	-37.61%
Nafta Especial	15,023	18,109	17,638	-2.60%	17.40%	88,581	80,183	10.47%	7.45%
Total	60,893	62,586	58,062	-7.23%	-4.65%	307,719	317,261	-3.01%	1.17%

FE: Valores fuera de escala

(*): Miles de toneladas



Fuente: Secretaría de Energía
Elaborado: I.A.E "Gral Mosconi"

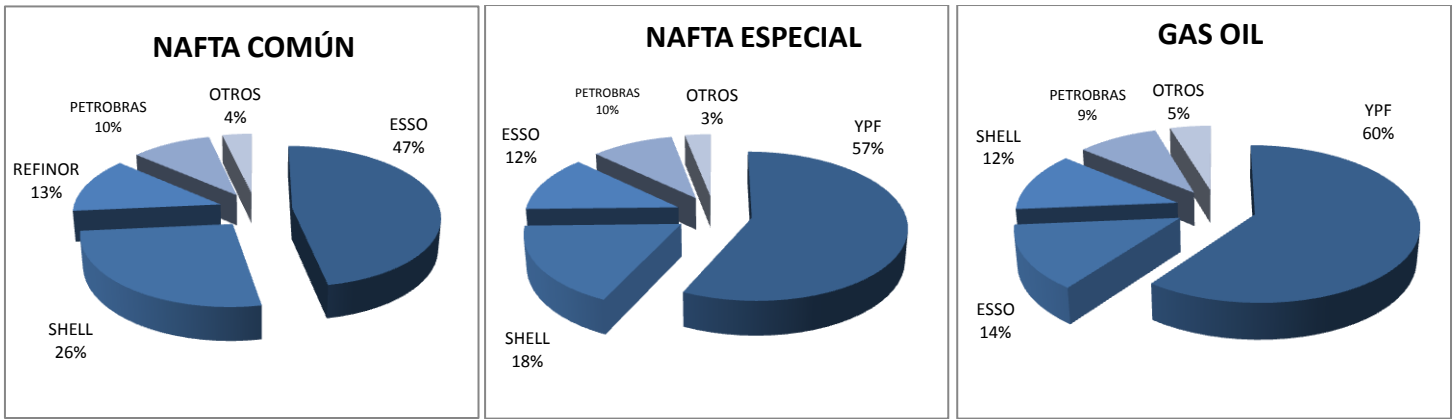
VENTAS AL MERCADO INTERNO DE DERIVADOS (m³/día)

	Mayo	Abril	Mayo	Variación	Variación	Acumulado a Mayo		
	2010	2011	2011	May'11/Abr'11	May'11/May'10	2011	2011	2011
Nafta Común	787.4	610.8	637.8	4.4%	-19.0%	3001.8	4425.3	-32.2%
Nafta Especial	15257.9	18136.8	16996.1	-6.3%	11.4%	90303.8	80055.8	12.8%
Kerosene	224.0	101.2	171.4	69.3%	-23.5%	522.0	682.9	-23.6%
Combustibles Retropropulsión	4241.5	4473.1	4240.8	-5.2%	0.0%	22950.0	22307.3	2.9%
Gas Oil	37914.3	37831.5	36611.2	-3.2%	-3.4%	188198.9	186698.9	0.8%
Diesel Oil	122.9	38.9	34.0	-12.7%	-72.4%	171.5	1102.2	-84.4%
Fuel Oil (1)	6073.1	5184.5	4599.6	-11.3%	-24.3%	25090.2	15525.1	61.6%
GNC (2)	0.0	8.4	8.1	-3.2%	-	41.0	22.6	81.3%

1] Toneladas

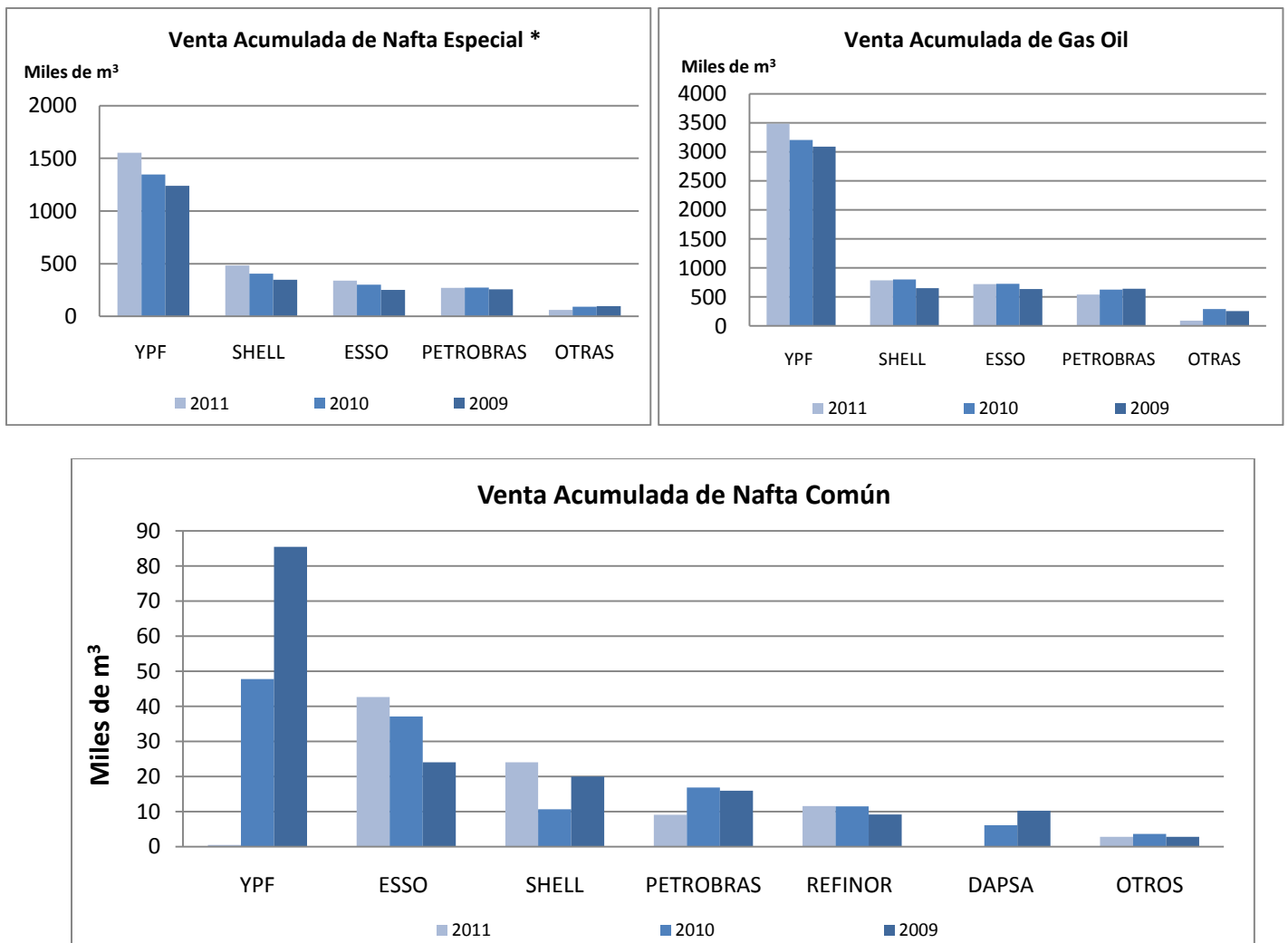
2] Miles de m³

PARTICIPACIÓN POR EMPRESAS - Acumulada a Mayo de 2011



Fuente: Secretaría de Energía
Elaborado: I.A.E "Gral Mosconi"

VENTAS AL MERCADO INTERNO DE DERIVADOS (Miles de m³) Acumuladas a Mayo - Años 2009, 2010 y 2011



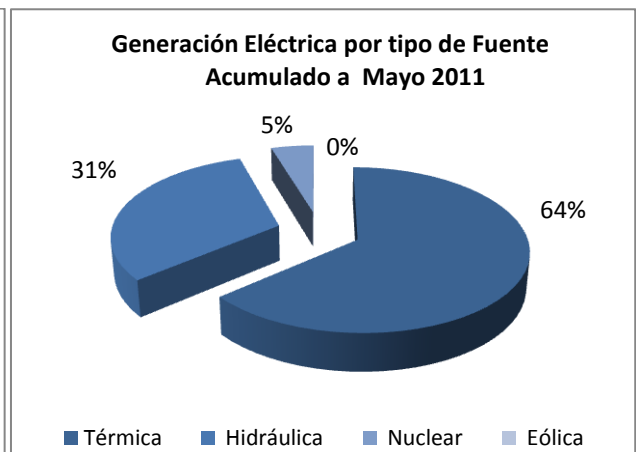
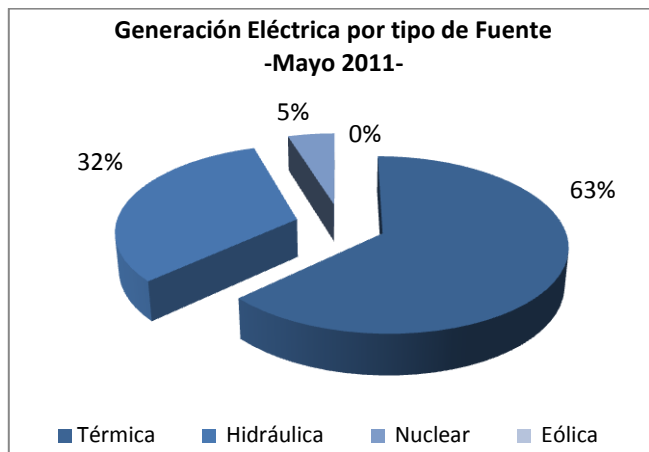
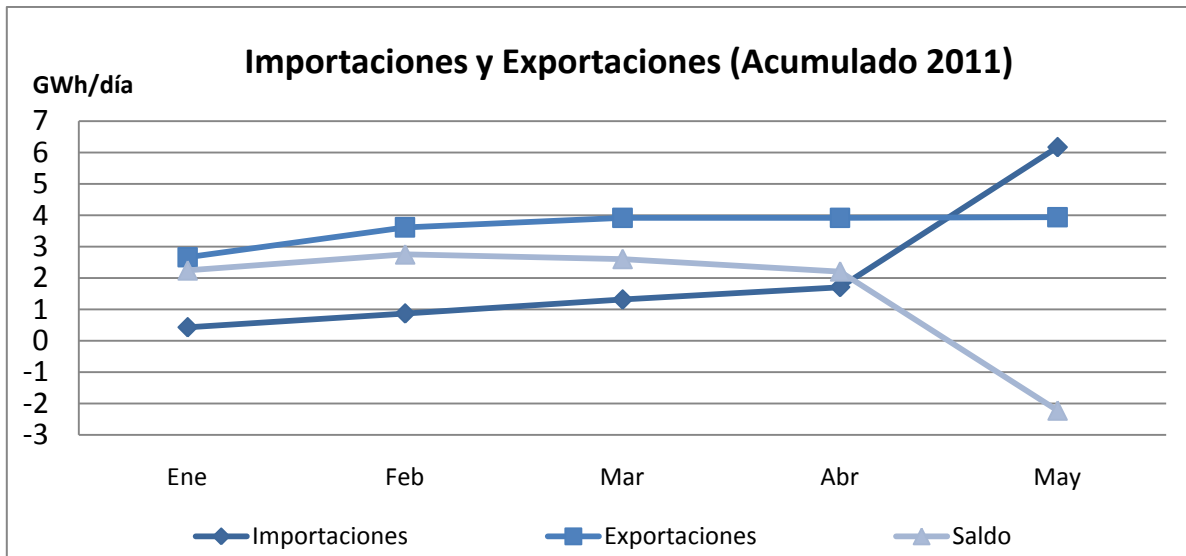
*: Nafta Especial= Nafta Súper + Nafta Ultra

Fuente: Secretaría de Energía
Elaborado: I.A.E "Gral Mosconi"

GENERACIÓN NETA DE ENERGÍA ELÉCTRICA - S.A.D.I. (GWh/día)

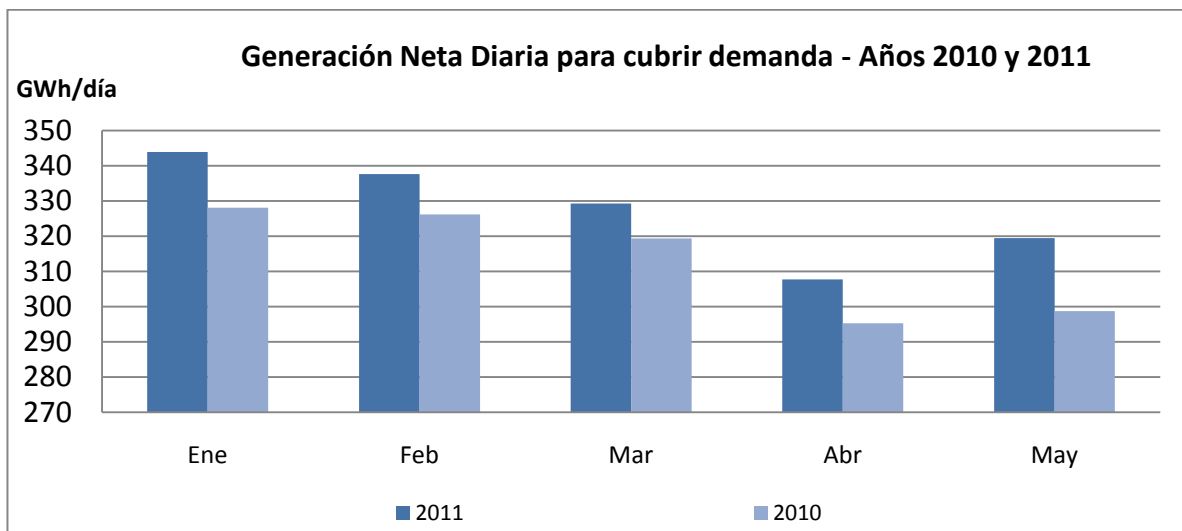
	CENTRAL	Abril	Marzo	Abril	Variación	Variación
		2010	2011	2011	Abr'11/Mar'11	Abr'11/Abr'10
TÉRMICAS	AES PARANA	14.84	14.84	12.97	-12.60%	2.56%
	DOCK SUD C.COMB	13.07	13.07	13.56	3.79%	49.96%
	GEBA	2.20	2.20	4.50	104.36%	-71.13%
	C.T.GENERAL BELGRANO	15.40	15.40	14.13	-8.25%	56.05%
	C.COMB.COSTANERA	14.14	14.14	12.02	-14.98%	12.48%
	LUJAN DE CUYO	9.60	9.60	9.90	3.10%	6.44%
	C.T.SAN MARTIN	11.57	11.57	10.17	-12.13%	-9.38%
	AGUA DEL CAJON	11.49	11.49	10.61	-7.65%	28.65%
	PIEDRABUENA	5.09	5.09	5.73	12.55%	-36.81%
	COSTANERA	6.84	6.84	11.07	61.79%	43.31%
	C.COMB.PUERTO	13.82	13.82	9.14	-33.88%	-
	CTSM DE TUCUMAN	6.40	6.40	5.32	-16.89%	-22.81%
	TERMOANDES	4.66	4.66	10.37	122.51%	51.36%
	S.NICOLAS	9.83	9.83	8.72	-11.31%	6.11%
	PUERTO NUEVO	3.62	3.62	8.51	134.85%	13.55%
	NUEVO PUERTO	6.21	6.21	6.54	5.38%	1.76%
	GUEMES	3.96	3.96	5.12	29.53%	56.04%
	C.T.TUCUMAN	5.52	5.52	5.85	6.02%	30.87%
	TERMOELECTRICA BA.	5.02	5.02	4.56	-9.17%	73.06%
	MARANZANA	2.09	2.09	2.69	28.84%	-29.02%
	PILAR CC	3.56	3.56	3.36	-5.60%	-
	C.T.PATAGONIA	2.56	2.56	2.28	-11.01%	-2.00%
	ALTO VALLE	1.49	1.49	1.19	-20.34%	-14.21%
	NECOCHEA	1.08	1.08	1.19	10.67%	-27.77%
	OTRAS TÉRMICAS	9.01	9.01	11.45	27.00%	54.36%
	Sub-Total Térmicas	183.06	183.06	190.94	4.31%	15.35%
	Auto generadores	2.92	2.92	3.02	3.56%	-30.67%
Cogeneradores	5.73	5.73	4.92	-14.00%	-13.26%	
Total Térmica	191.70	191.70	198.89	3.75%	13.28%	
HIDRÁULICAS	YACYRETA	55.25	55.25	50.39	-8.79%	-3.06%
	SALTO GRANDE	14.16	14.16	11.04	-22.03%	-40.54%
	P.DEL AGUILA	6.76	6.76	10.16	50.28%	49.11%
	FUTALEUFU	6.17	6.17	6.69	8.44%	-15.70%
	CHOCON	3.62	3.62	7.06	94.95%	44.76%
	ALICURA	2.43	2.43	2.77	13.72%	24.53%
	P.BANDERITA	1.97	1.97	1.49	-24.41%	-6.92%
	C.H.PICHI PICUN LEUFU	1.38	1.38	2.10	52.04%	47.47%
	ARROYITO	0.97	0.97	1.84	89.74%	34.16%
	RIO GRANDE	1.71	1.71	0.74	-56.81%	-71.67%
	CACHEUTA NUEVA	1.07	1.07	0.65	-39.19%	-50.47%
	CABRA CORRAL	0.74	0.74	0.71	FE	FE
	NIHUIL 2	0.87	0.87	0.56	-35.22%	-23.31%
	NIHUIL 1	0.87	0.87	0.58	-32.98%	-20.83%
	AGUA DEL TORO	0.46	0.46	0.13	-72.96%	-84.70%
	CASA DE PIEDRA	0.45	0.45	0.10	-77.26%	-72.91%
	LOS REYUNOS	0.45	0.45	0.35	-20.97%	-31.38%
	OTRAS HIDRÁULICAS	4.83	4.83	3.62	-24.95%	-31.55%
	Total Hidráulica	104.16	104.16	100.98	-3.06%	-7.88%
	EÓLICA	NECOCHEA Y ARAUCO	0.02	0.02	0.03	18.29%
FOTOVOLTAICA	SAN JUAN 1	0.00	0.00	0.01	-	-
NUCLEARES	ATUCHA 1	0.00	0.00	4.21	-	-47.01%
	EMBALSE	11.43	11.43	10.89	-4.66%	166.77%
	Total Nuclear	11.43	11.43	15.11	32.21%	25.53%
IMPORTACIONES		1.49	0.40	4.46	FE	200.13%
GENERACIÓN TOTAL ENERGÍA ELÉCTRICA		298.70	307.71	319.46	3.82%	6.95%

IMPORTACION / EXPORTACION DE UTE (GWh/día)						
	Mayo 2010	Abril 2011	Mayo 2011	Variación May'11/Abr'11	Variación May'11/May'10	Año Móvil Ac. Jun'10-May'11 / Ac. Jun'09-May'10
IMPORTACIÓN	1.5	0.4	4.5	FE	200.00%	34%
EXPORTACIÓN	0.0	0.0	0.0	-	-	-53.21%



Fuente: CAMMESA

Elaboración: I.A.E. "General Mosconi"

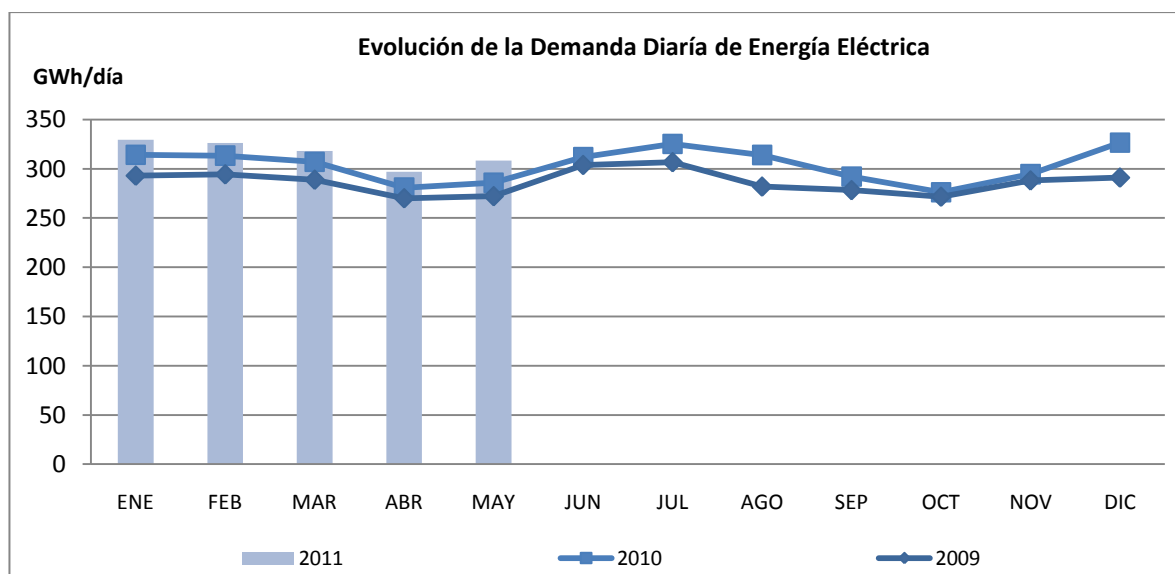


Fuente: CAMMESA

Elaboración: I.A.E. "General Mosconi"

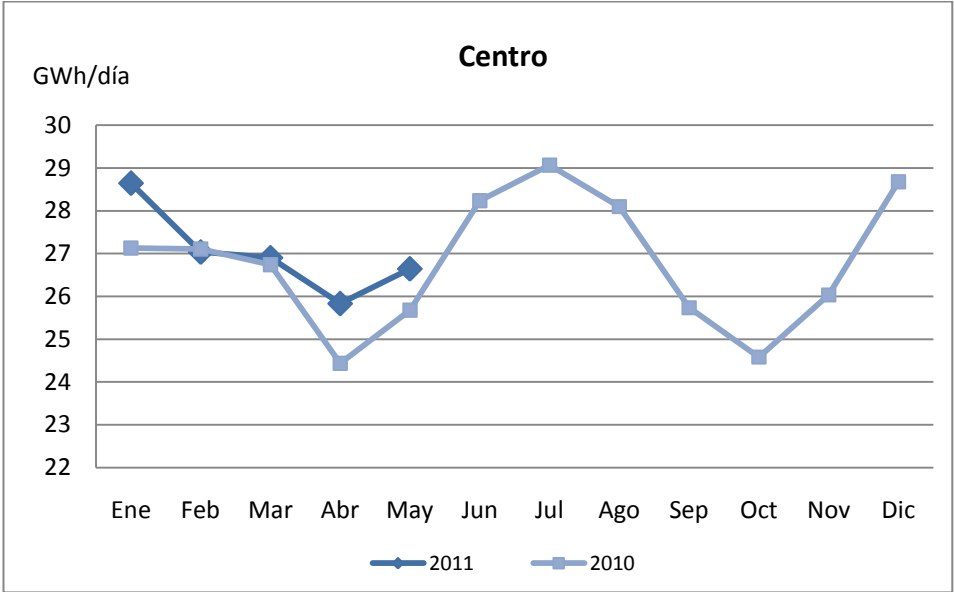
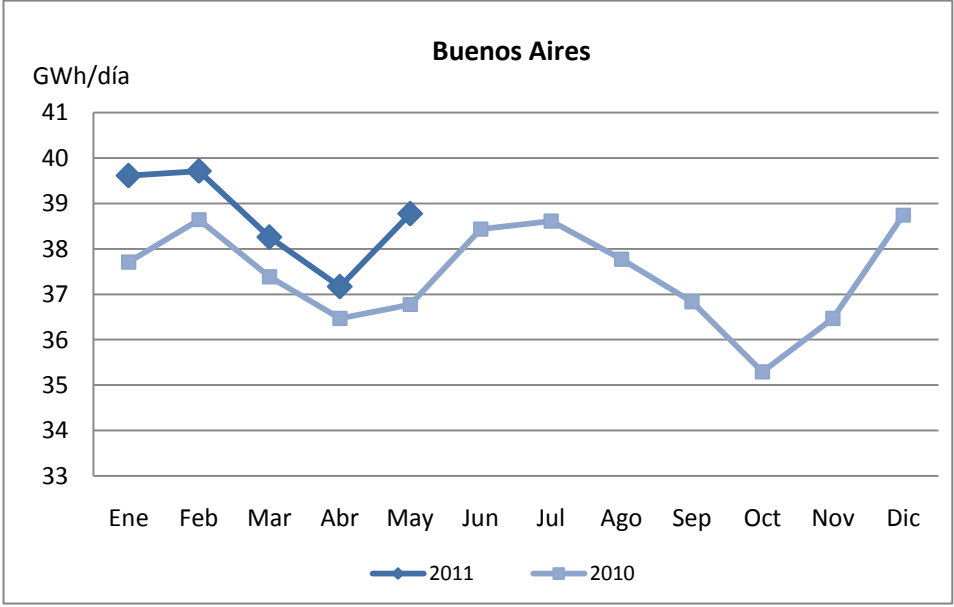
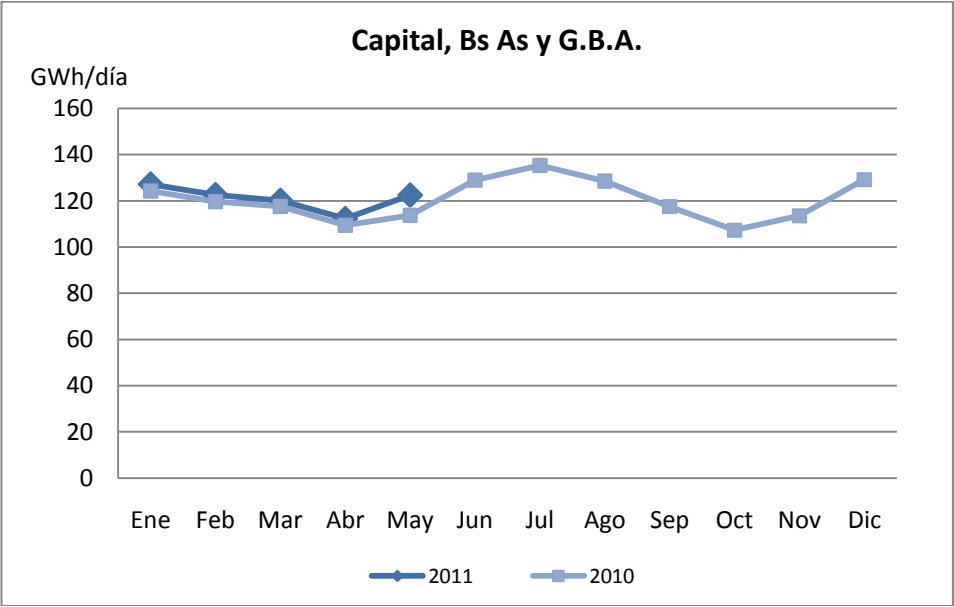
DEMANDAS NETAS DE ENERGÍA ELÉCTRICA (GWh/día) - S.A.D.I.

JURISDICCIÓN	Mayo	Abril	Mayo	Variación	Variación	Año Móvil
	2010	2011	2011	May'11/Abr'11	May'11/May'10	Ac. Jun'10-May'11 / Ac. Jun'09-May'10
Edenor	57.5	56.5	62.3	10.25%	8.24%	5.39%
Edesur	47.5	47.5	51.0	7.38%	7.26%	3.96%
Santa Fe	30.3	31.1	31.5	1.55%	4.15%	6.91%
Córdoba	22.0	22.1	22.7	2.91%	3.23%	3.82%
Eden	19.7	19.7	20.6	4.46%	4.58%	8.15%
Mendoza	12.7	14.0	14.3	2.30%	12.69%	6.68%
Edea	11.3	11.9	12.3	3.01%	8.88%	8.07%
Edelap	8.6	8.3	9.2	10.38%	5.97%	4.65%
Entre Ríos	7.2	7.7	7.6	-0.71%	6.76%	7.52%
Edes	5.9	6.5	6.3	-2.73%	7.14%	6.10%
Neuquén	6.1	6.3	6.4	1.36%	4.74%	-3.97%
Tucumán	5.8	5.5	5.9	6.68%	1.67%	-6.91%
Corrientes	4.8	5.6	5.1	-8.99%	6.04%	3.38%
Catamarca	4.9	5.0	5.1	0.62%	3.97%	3.34%
Chaco	4.0	5.0	4.6	-7.10%	16.13%	4.40%
San Juan	4.1	4.6	4.4	-3.23%	7.03%	4.91%
Salta	3.9	4.0	4.2	4.91%	6.61%	5.43%
Rio Negro	3.2	4.4	4.3	-2.50%	35.35%	14.64%
Misiones	4.0	4.6	4.4	-3.93%	8.80%	12.49%
San Luis	3.7	3.8	3.9	4.48%	7.02%	5.17%
Chubut Norte	2.7	6.6	6.1	-7.65%	121.18%	53.92%
La Rioja	2.8	2.8	2.7	-3.23%	-1.16%	4.38%
Chubut Sur	2.9	2.8	2.7	-5.50%	-8.79%	-2.76%
Santiago Del Estero	2.2	2.5	2.4	-4.52%	8.82%	2.99%
Formosa	1.9	2.6	2.2	-14.54%	15.25%	5.64%
Jujuy	2.1	2.2	2.3	7.20%	12.50%	5.53%
La Pampa	1.9	2.0	2.0	0.05%	3.39%	2.96%
Santa Cruz	1.5	1.0	1.2	16.13%	-23.40%	-5.72%
Rio Negro Sist. Pat.	0.5	0.6	0.6	-3.23%	20.00%	14.01%
TOTAL DEMANDA	285.8	297.0	308.3	3.78%	7.87%	5.58%

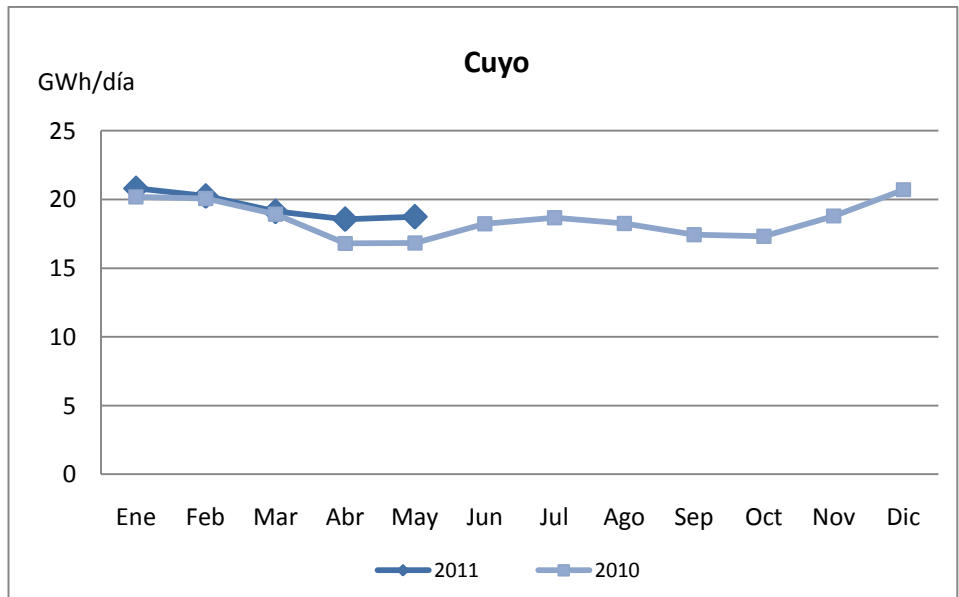
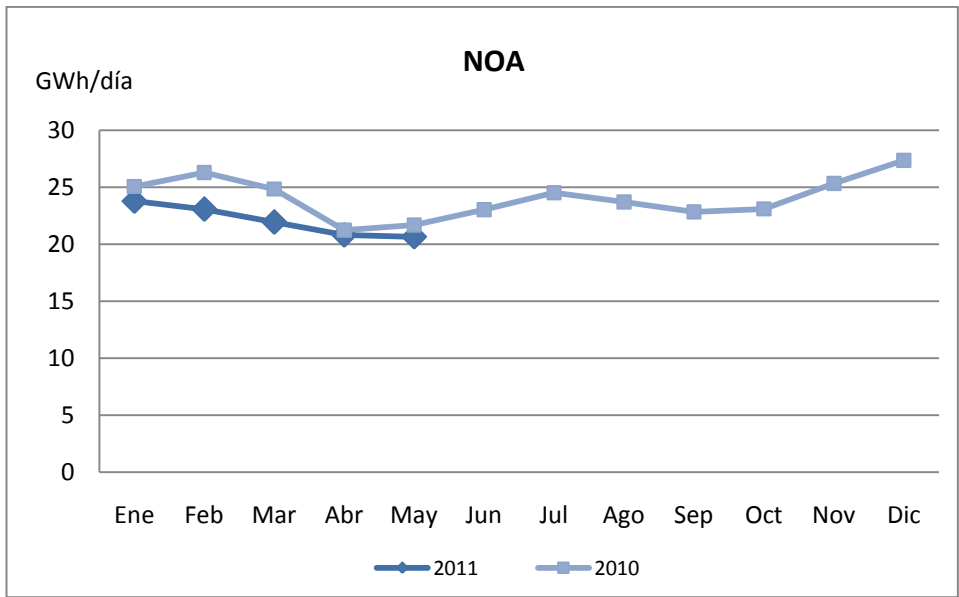
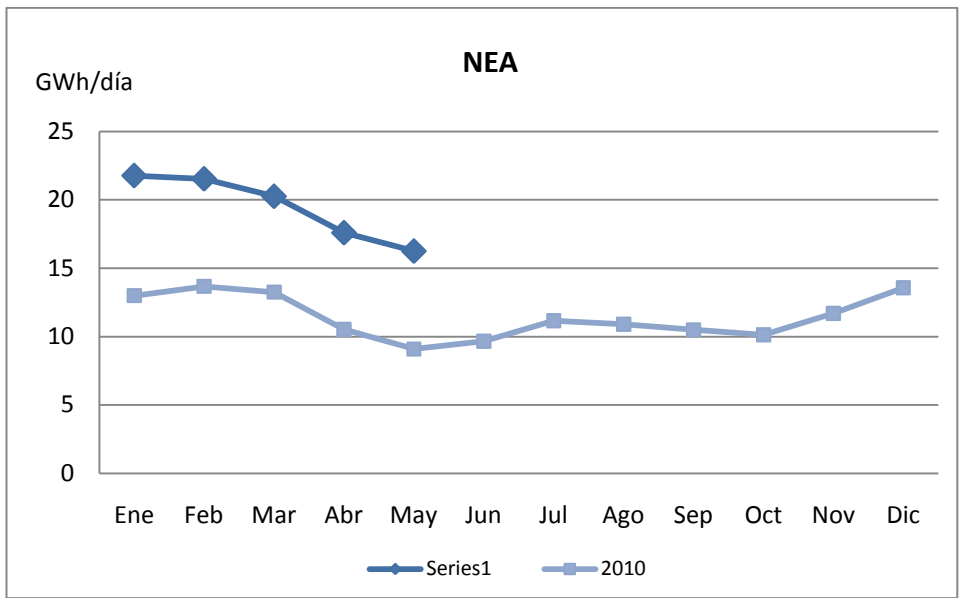


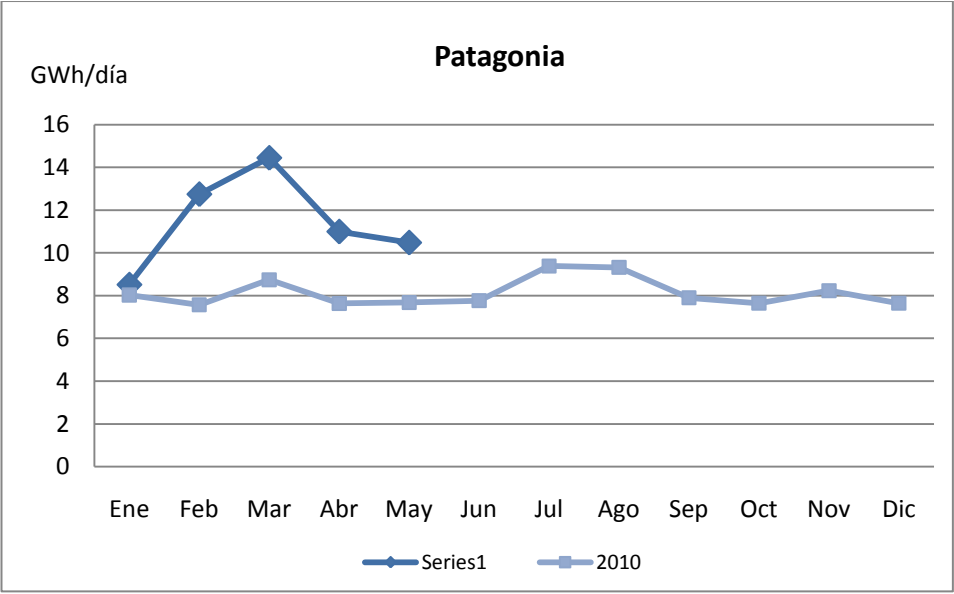
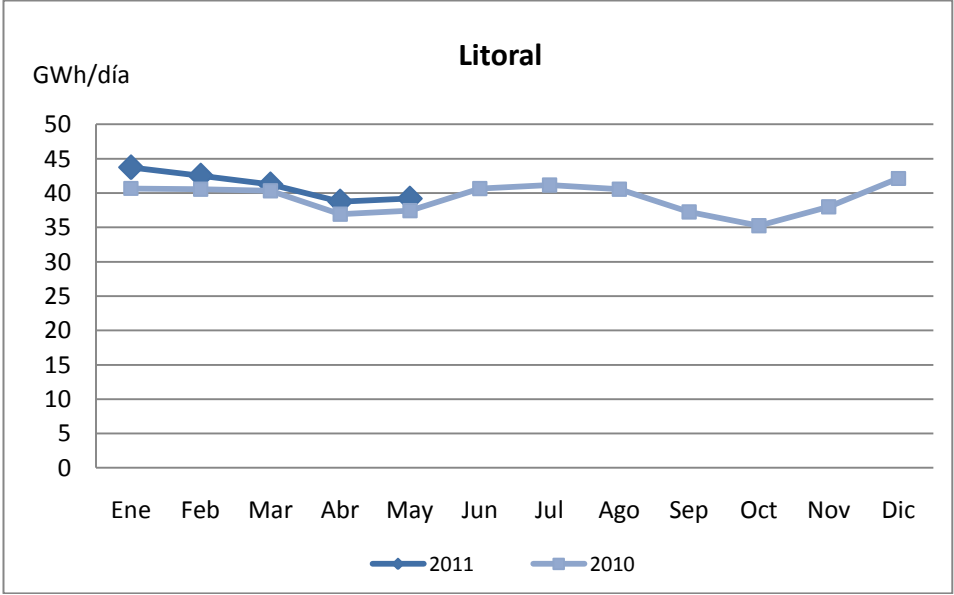
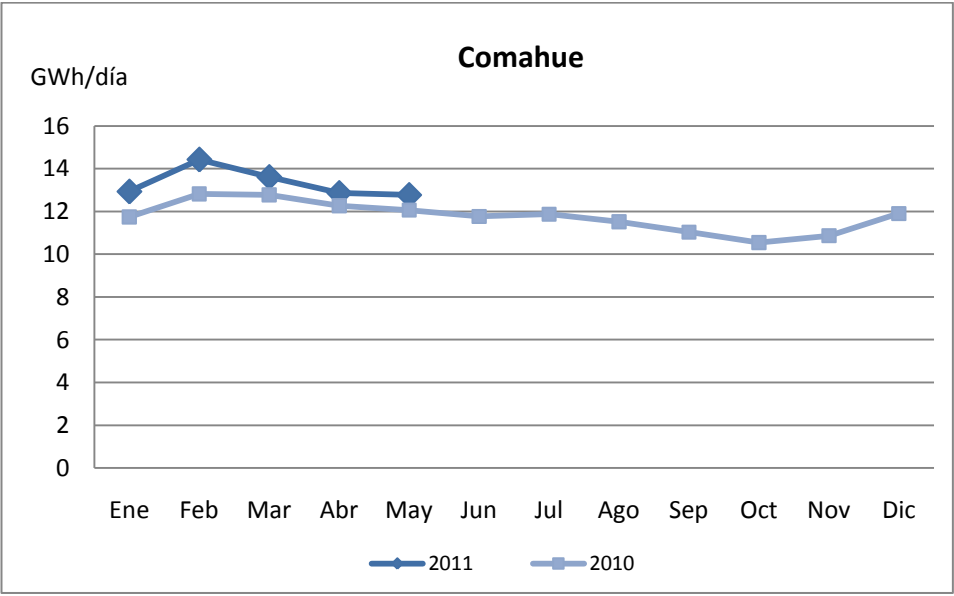
Fuente: CAMMESA

Elaboración: I.A.E. "General Mosconi"



Fuente: CAMMESA
 Elaboración: I.A.E. "General Mosconi"





Fuente: CAMMESA

Elaboración: I.A.E. "General Mosconi"

CAUDALES Y COTAS EN LOS PRINCIPALES APROVECHAMIENTOS HIDROELÉCTRICOS

CAUDALES MEDIOS MENSUALES REALES (m ³ /seg)	Mayo	Abril	Mayo	Medio histórico	Variación	Variación	Variación
	2010	2011	2011	Mayo	May'11/Abr'11	May'11/May'10	May'11/Media histórica Mayo
RÍO URUGUAY	9172	5856	4016	5120	-31.42%	-56.21%	-21.56%
RÍO PARANÁ	17540	19246	12971	12531	-32.60%	-26.05%	3.51%
RÍO FUTALEUFÚ	194	159	167	277	5.03%	-13.92%	-39.71%
RÍO COLLÓN CURÁ	90	129	161	273	24.81%	78.89%	-41.03%
RÍO LIMAY (en Alicurá)	112	102	129	170	26.47%	15.18%	-24.12%
RÍO NEUQUÉN	94	92	108	200	17.39%	14.89%	-46.00%

Fuente: CAMMESA

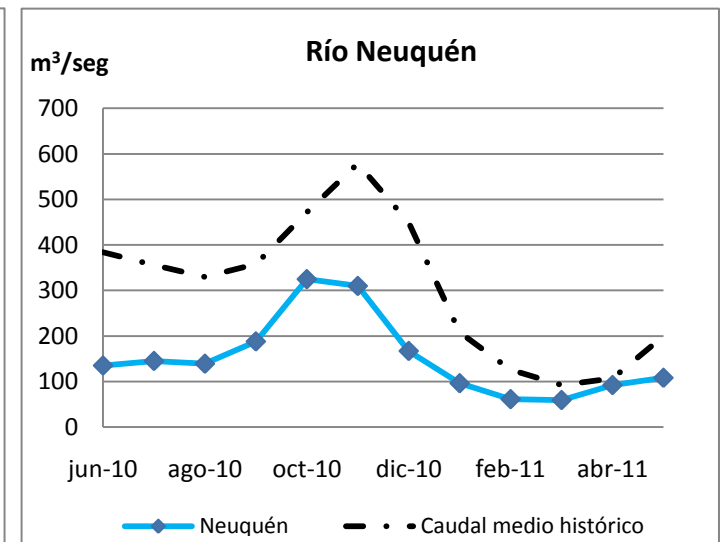
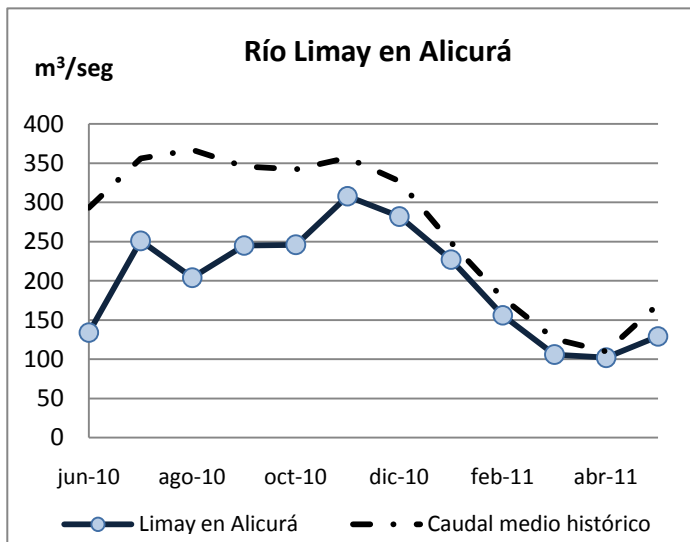
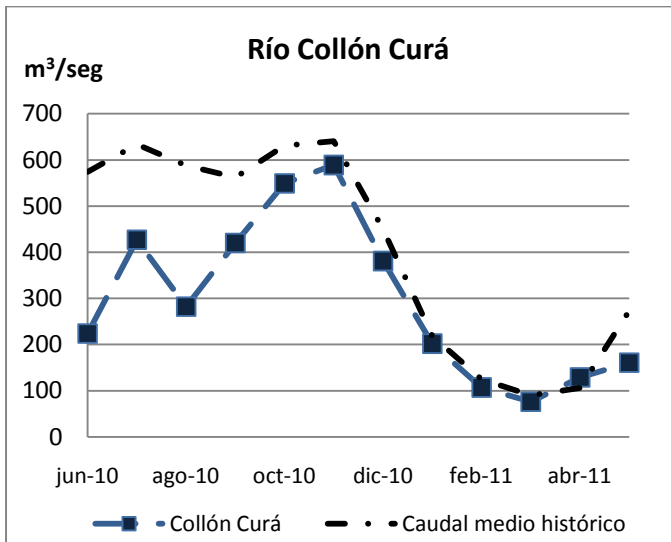
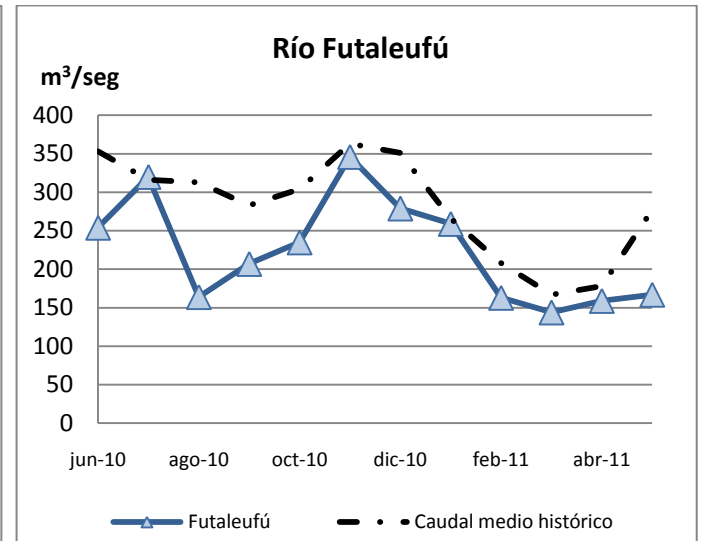
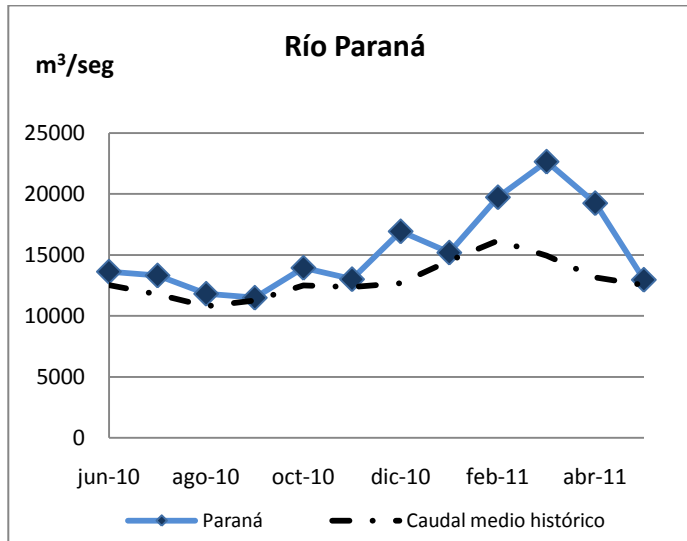
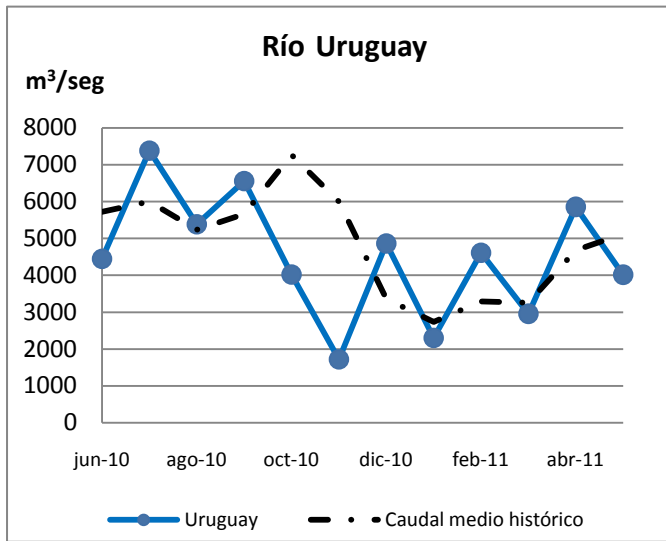
Elaboración: I.A.E. "General Mosconi"

COTAS A FIN DE MES (metros)

	Operable (Mayo)		Mayo	Abril	Mayo	Variación	Variación	Variación
	Atenuación Crecidas	Mínima	2010	2011	2011	May'11/Abr'11	May'11/May'10	May'11/Mínima histórica May
FUTALEUFÚ	490.5	465	488.5	491.32	489.87	-0.30%	0.28%	5.35%
CHOCÓN	378	370	376.98	377.14	376.79	-0.09%	-0.05%	1.84%
ALICURÁ	-	-	704.17	704.07	704.08	0.00%	-0.01%	-
CERROS COLORADOS	414	412	413.65	412.73	412.53	-0.05%	-0.27%	0.13%
PIEDRA DEL ÁGUILA	586	576	588.44	589.79	588.07	-0.29%	-0.06%	2.10%
PICHI PICÚN LEUFÚ	-	-	478.33	478.72	478.68	-0.01%	0.07%	-
YACYRETÁ	-	-	79.61	83.04	83.06	0.02%	4.33%	-
SALTO GRANDE	-	-	35.21	33.93	34.11	0.53%	-3.12%	-
CERRO PELADO	-	-	872.7	873.87	974.71	11.54%	11.69%	-

Fuente: CAMMESA

Elaboración: I.A.E. "General Mosconi"



Fuente: CAMMESA
 Elaboración: I.A.E. "General Mosconi"

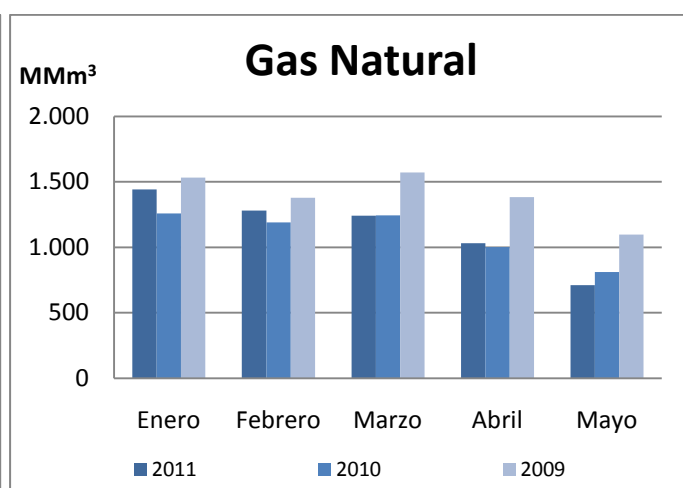
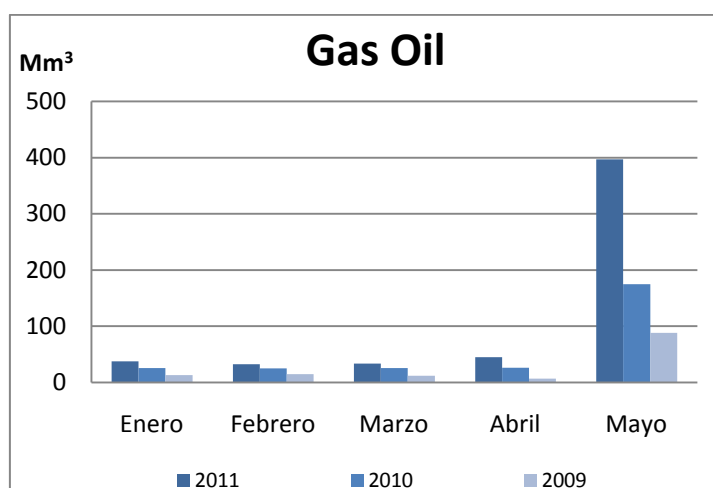
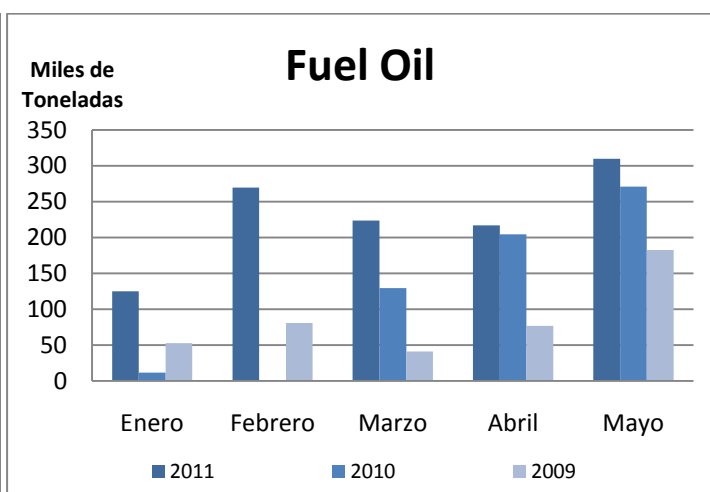
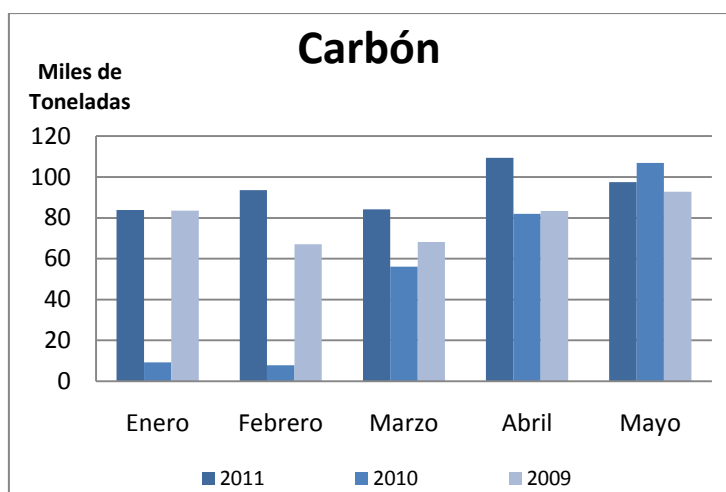
UTILIZACIÓN DE COMBUSTIBLES SISTEMA ARGENTINO DE INTERCONEXIÓN						
	Mayo 2010	Abril 2011	Mayo 2011	Variación May'11/Abr'11	Variación May'11/May'10	Año Móvil Ac. Jun'10-May'11 / Ac. Jun'09-May'10
Gas Natural (Mm3)	1002906	1030807	711867	-30.94%	-29.02%	5.52%
Carbón (Toneladas)	81898	109419	97484	-10.91%	19.03%	63.02%
Gas Oil (m3)	26167	44972	397141	FE	FE	73.50%
Fuel Oil (Toneladas)	204706	217123	309797	42.68%	51.34%	51.65%

FE: Valores fuera de escala

Fuente: CAMMESA

Elaboración: I.A.E. "General Mosconi"

Consumo de Combustibles Años 2009, 2010 y 2011



Fuente: CAMMESA

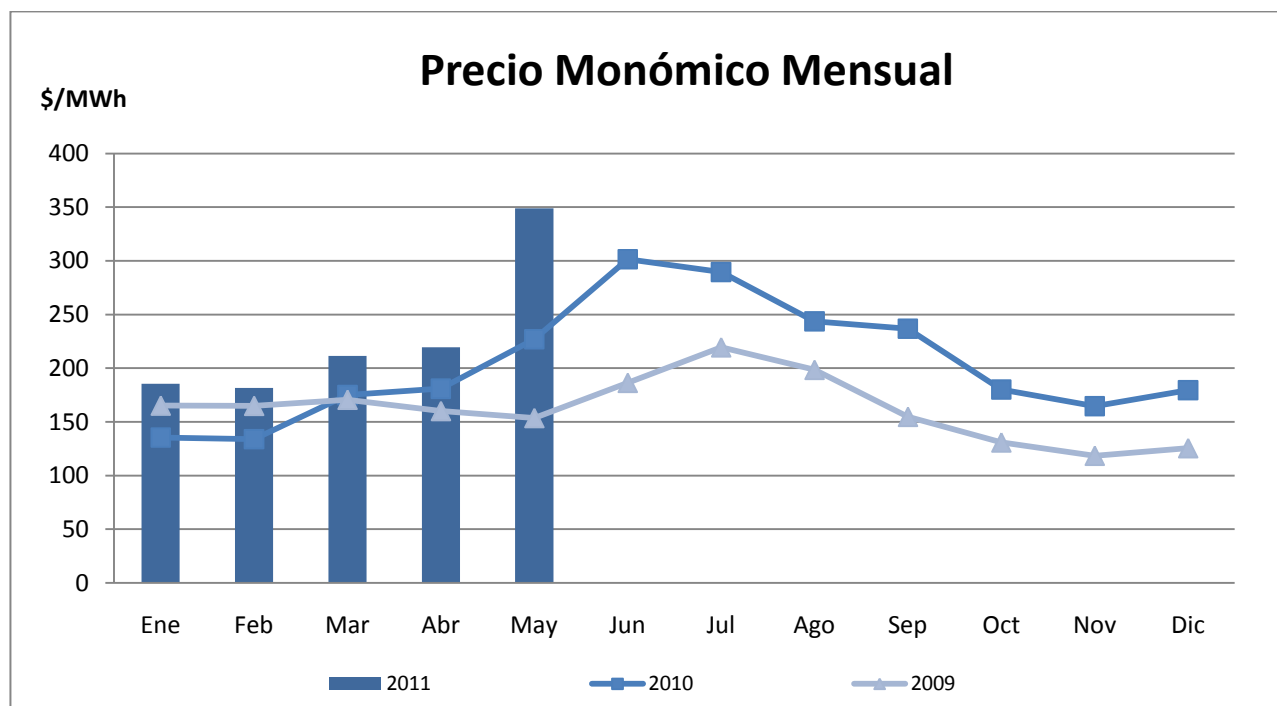
Elaboración: I.A.E. "General Mosconi"

PRECIOS MEDIOS MONÓMICOS MENSUALES (\$/MWh) SISTEMA ARGENTINO DE INTERCONEXIÓN

	Mayo 2010	Abril 2011	Mayo 2011	Variación May'11/Abr'11	Variación May'11/May'10
PRECIO DE ENERGÍA	116.22	119.82	119.66	-0.13%	2.96%
SOBRECOSTO. TRANS. DESPACHO	82.9	67.09	195.34	191.16%	135.63%
ENERGIA ADICIONAL	4.24	4.34	3.35	-22.81%	-20.99%
SOBRECOSTO COMBUSTILE	6.52	11.17	10.43	-6.62%	59.97%
POTENCIA	16.99	17.1	20.08	17.43%	18.19%
PRECIO MONÓMICO	226.87	219.52	348.86	58.92%	53.77%

Fuente: CAMMESA

Elaboración: I.A.E. "General Mosconi"



Fuente: CAMMESA

Elaboración: I.A.E. "General Mosconi"

Departamento Técnico

Gerardo Rabinovich
Luciano Caratori
Lucas David Bertogliati

Instituto Argentino de la Energía "General Mosconi"
iae@iae.org.ar
www.iae.org.ar